

Wireless Networking User Guide

Your Gateway Solo notebook comes with wireless Ethernet (also known as IEEE 802.11b or WiFi) networking.

Important



For more information about networking your home or office, discuss your particular needs with your Gateway Country Store representative. In addition, several books and Internet sites are dedicated to networking. Refer to these sources for more information about networking your home or office with wireless Ethernet.

Setting up wireless Ethernet networking

Installing the Client Manager

If you have wireless Ethernet, the first time you start your Gateway Solo notebook, your system automatically installs the wireless Ethernet drivers. Immediately following the initial startup, you are asked to install the wireless Ethernet client manager.



To install the ORiNOCO Client Manager:

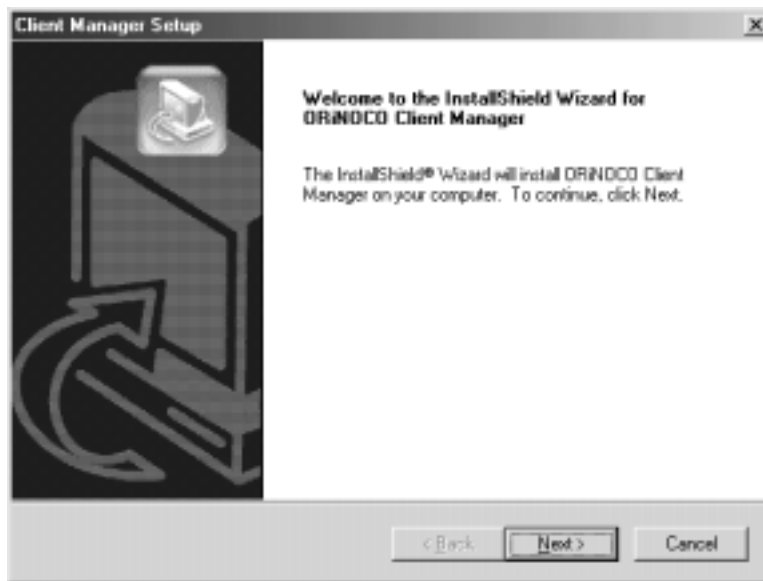
- 1** Insert the ORiNOCO CD in your CD/DVD drive.
- 2** Click **Start**, then select **Run**. The Run dialog box opens.
- 3** In the Run text box, type **D:\acl_mgr\setup.exe** (where D is the drive letter of your CD/DVD drive).

Thank you for purchasing this Factory Service Manual CD/DVD from servicemanuals4u.com.

Please check out our eBay auctions for more great deals on Factory Service Manuals:

[servicemanuals4u](http://servicemanuals4u.com)

- 4** Click **OK**. The Client Manager Setup wizard starts.



- 5** Follow the on-screen prompts to complete the setup wizard.
- 6** After reading the Readme file that appears, click the **X** in the top right corner of the window to close it.



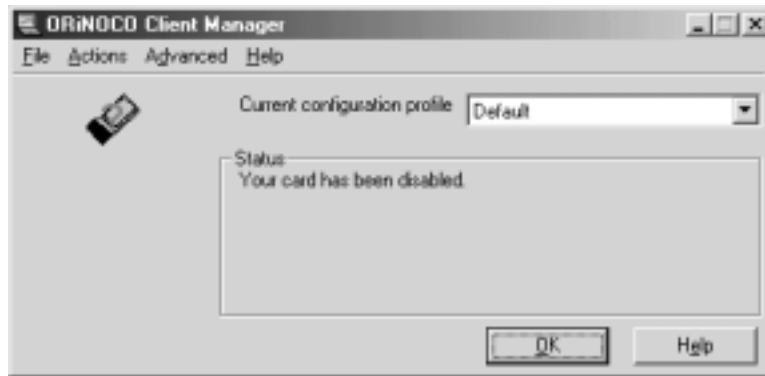
Configuring your wireless Ethernet client manager

After you install the client manager, you need to configure your network settings.

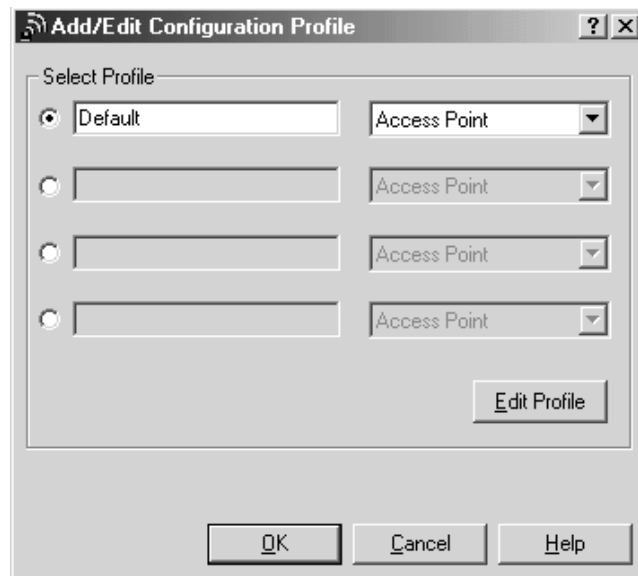


To configure your wireless Ethernet client manager:

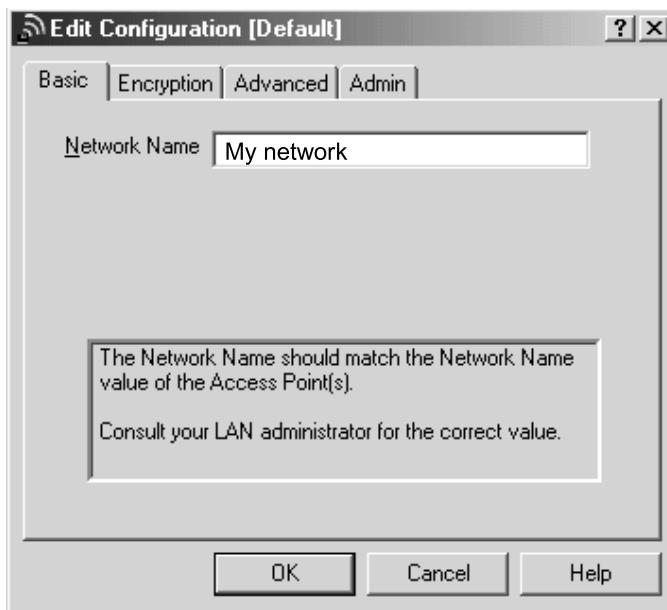
- 1 Click **Start**, then select **Programs**, **ORiNOCO**, then **Client Manager**. The ORiNOCO Client Manager window opens.



- 2 Select **Actions**, then **Add/Edit Profile**. The Add/Edit Configuration Profile dialog box opens.



- 3 Enter the name of the profile you are creating. When you create the first profile, you should rename the Default profile to the name of your profile. For example, if you will be using your computer on two different networks, such as at home and at work, you may want to name one profile Home and another one Work.
- 4 Select the type of network associated with this profile. Your options include:
 - Access Point - Use this network type if you are joining a wireless network and accessing a wired network through an access point. Contact your network system administrator or refer to the access point documentation for more information about using this network type.
 - Residential Gateway - Use this network type if you are setting up or joining a wireless network that is using a residential gateway to access the Internet.
 - Peer-to-Peer Group - Use this network type if you are setting up or joining a temporary or permanent computer-to-computer network for sharing files and peripheral devices. This type of network does not include an access point into a wired network.
- 5 Click the **Edit Profile** button. The Edit Configuration dialog box opens.



- 6** Enter the name of your network and the encryption key (if required).
- If you are connecting to an access point network, enter **ANY** to connect to any wireless Ethernet network within range of your notebook, or enter the exact network name of the network you are joining.
 - If you are connecting to a residential gateway network, enter the residential gateway identifier number for the network name and the last five characters of the residential gateway identifier number as the encryption key.
 - If you are connecting to a peer-to-peer network, enter the exact network name for the network you are joining. If an encryption key has been agreed to by the other members of the network, enter this value as well.

Important

All computers on your network must have the same network name and encryption key. For help, ask your network system administrator.

- 7** If you are configuring your notebook for an access point network, tabs are available to enter additional configuration information as necessary. Contact your network system administrator or refer to the access point documentation before entering this information.
- 8** Click **OK** to close the Edit Configuration dialog box.
- 9** If you are setting up your notebook for more than one network, repeat steps 3 through 8 to create additional profiles.
- 10** Click **OK** to close the Add/Edit Configuration Profile dialog box.



Identifying this notebook on the Microsoft Network Neighborhood

If this is the first time you have used networking on your notebook, you need to provide Windows with the name of the notebook and the workgroup to which it belongs.



To identify this notebook on the network:

- 1 Click **Start**, then select **Settings**, then **Control Panel**. The Control Panel window opens. If you do not see the Network icon, click **view all Control Panel options**.
- 2 Double-click the **Network** icon. The Network dialog box opens.
- 3 Select the **Identification** tab.



- 4 Enter a unique computer name. This name identifies this notebook on the Microsoft Network Neighborhood.
- 5 Enter the name of the workgroup this notebook belongs to. This name is usually assigned by the network system administrator and identifies which group of computers this notebook is most likely to communicate with.

- 6 Enter a description of the notebook. This description lets other Microsoft Network Neighborhood users identify who this notebook belongs to.
- 7 Click **OK**.



Configuring Windows for wireless Ethernet

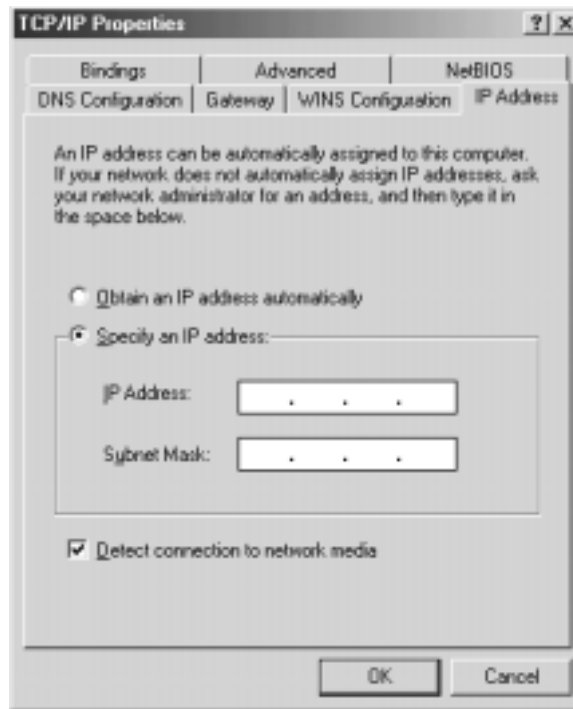


To configure Windows to use the wireless Ethernet network:

- 1 Click **Start**, then select **Settings**, then **Control Panel**. The Control Panel window opens. If you do not see the Network icon, click **view all Control Panel options**.
- 2 Double-click the **Network** icon. The Network dialog box opens.



- 3** Select **TCP/IP -> ORINOCO Mini PCI Card**, then click **Properties**. The TCP/IP Properties dialog box opens.



- 4** Click the **IP Address** tab.
- 5** If you are using a DHCP server, click **Obtain an IP address automatically**.
- OR -
If you are not using a DHCP server, click **Specify an IP address** and enter the **IP Address** and **Subnet Mask**.

Important



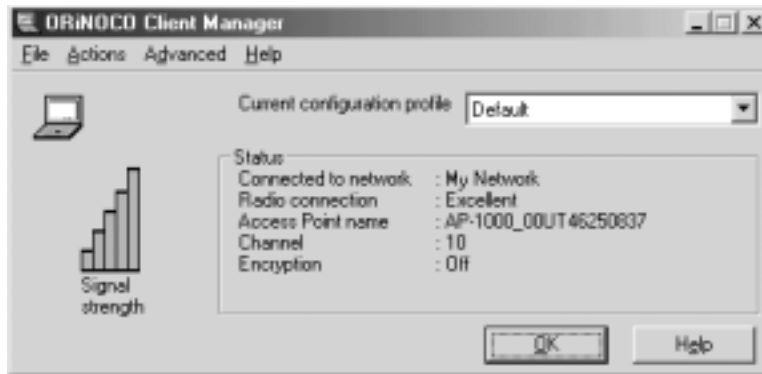
If you are required to enter an IP Address and Subnet Mask, ask your network system administrator for the correct values.

- 6** Click **OK** to close the TCP/IP Properties dialog box.
- 7** Click **OK** to close the Network dialog box.

- 8** Click **Start**, then select **Programs**, **ORiNOCO**, then **Client Manager**. The ORiNOCO Client Manager opens.

The meter on the left side now registers the signal strength for wireless Ethernet on your notebook if other computers with the same network name are within range of your notebook.

The status box in the middle provides status and error messages.



Important



Signal strength is affected by the distance between your wireless network devices, by radio interference, and interference due to natural obstructions such as walls, floors, and doors.

Turning your wireless Ethernet on or off

There are times, such as when you are flying in an aircraft, when you should turn off your wireless Ethernet network. You can also turn off wireless Ethernet to conserve battery power.



To turn the wireless Ethernet network on or off:

- 1** Right-click the ORiNOCO Client Manager icon  in the taskbar.
- 2** Select **Enable Radio** or **Disable Radio**.




Accessing a different wireless Ethernet network

Once you have set up your profiles for all the possible wireless Ethernet networks you may want to access, it is easy to access a different network.



To access a different wireless Ethernet network:

- 1 Right-click the ORiNOCO Client Manager icon  in the taskbar.
- 2 Select **Configuration Profile**, then the profile that you have set up for the new network.



Technical Support

Refer to your Gateway Solo user's guide for Gateway Technical Support information.

Safety, Regulatory, and Legal Information

Refer to your Gateway Solo user's guide for important safety, regulatory, and legal information related to wireless networking.

MAN US WIRELESS NET GDE R0 7/01



8508055